



HIGH QUALITY
BEARING
MANUFACTURER



BKZ INDUSTRY



Tel

+86 18901426056



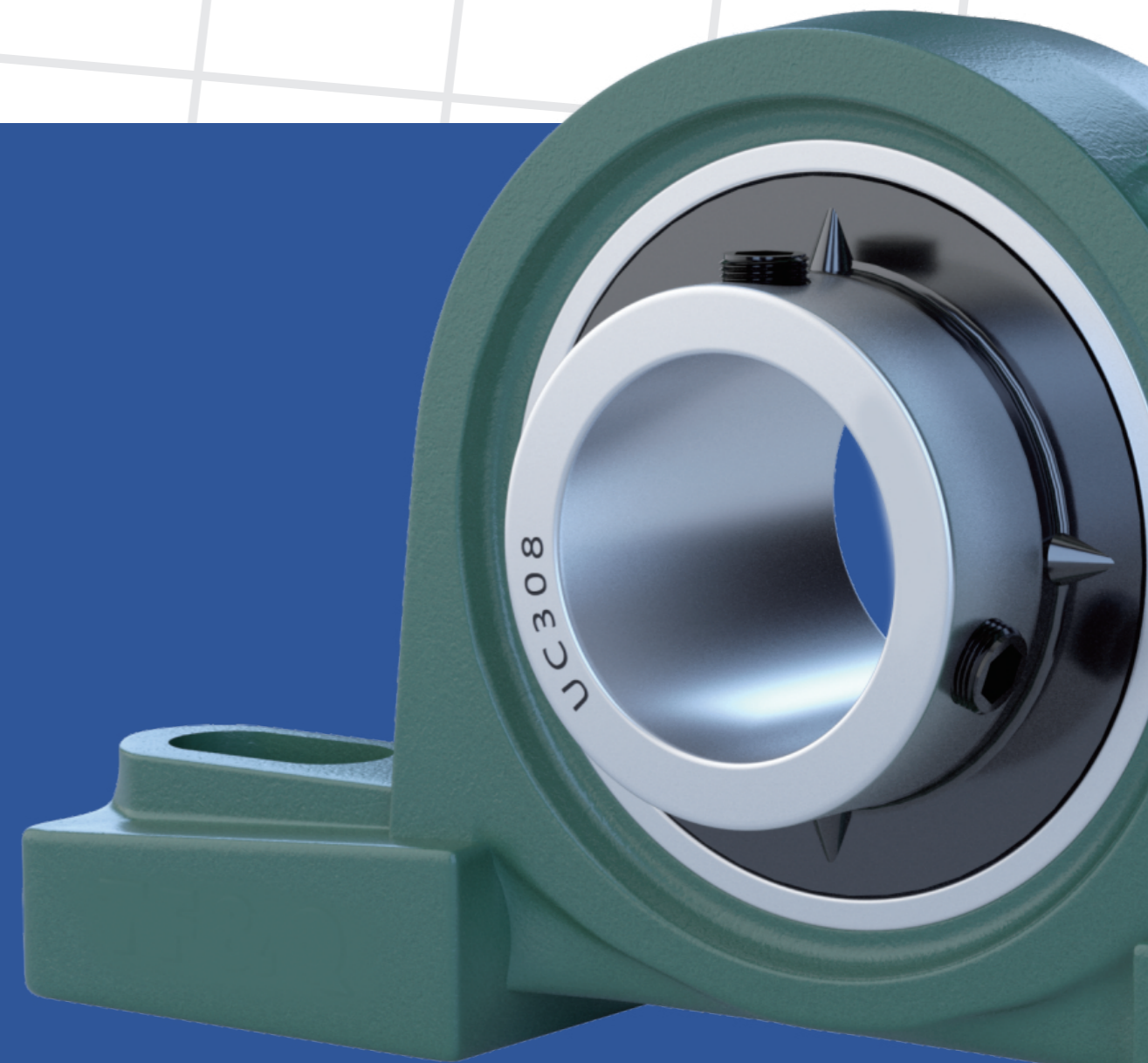
Email

sales@bkzindustry.com



Address

No. 7 Chuangye Road,
Daokou Industrial Park,
Jinghe Town, Baoying
County, Yangzhou City,
Jiangsu Province, China



ENTERPRISE INTRODUCTION

BKZ[®]



BKZ Industry is a leading global manufacturer of high-quality bearings, offering both standard and customized solutions to meet the needs of industries such as automotive, machinery, and mining. With over 15 years of experience, BKZ is committed to delivering efficient, reliable, and sustainable products through advanced manufacturing processes. Our state-of-the-art production lines ensure that we can meet the demands of a wide range of applications, providing bearings that enhance performance and reliability.

Our advanced production capabilities allow us to oversee the entire manufacturing process, from raw material preparation to final packaging, ensuring complete quality control. BKZ is **ISO 9001** certified and offers additional certifications such as REACH and RoHS upon request, underscoring our commitment to quality and compliance.

Our engineering team, backed by years of expertise, works closely with clients to develop bearings that meet their specific needs, delivering customized solutions for diverse industries. Whether you require standard bearings or specialized custom products, BKZ is equipped to provide exceptional service and top-tier products. With plans for continued growth and innovation, we are dedicated to shaping the future of bearing technology and maintaining our position as a trusted industry leader.



PRODUCTION AND TESTING

The company has modern production equipment, perfect quality testing means, mature manufacturing technology, strict production process management and a full range of after-sales service, in strict accordance with the bearing industry standards to ensure product quality, stable and reliable quality.

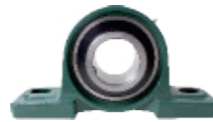
BALL BEARING UNITS

BKZ Industry specializes in high-quality ball bearing units, designed for a wide range of industrial applications. Our units consist of an insert bearing securely housed within a durable casing, ensuring exceptional reliability and ease of installation. Engineered for self-alignment, they accommodate misalignment and handle heavy radial loads effortlessly. The robust housing provides protection against contamination and external damage, helping to extend the lifespan of the units while reducing maintenance costs. With a focus on durability and efficiency, BKZ Industry's ball bearing units are ideal for enhancing performance across various industries.



Available in a variety of designs, including pillow block, flanged, and take-up units, BKZ Industry's ball bearing units are highly versatile and adaptable to diverse machinery and operational environments. Our products are engineered to improve system performance, minimize downtime, and offer reliable solutions for long-lasting operation. Whether you need efficient assembly, superior durability, or high-performance bearings, BKZ Industry provides the perfect solution for your industrial machinery needs. Our ball bearing units deliver exceptional value, ensuring smooth and efficient operations, making them the trusted choice for businesses across various sectors.

UCP200 Series – Pillow Block Bearing Units (Set Screw Locking)



Bearing No.	Dimensions(mm)										Weight (kg)	Bearing Type	Housing Type
	B	L	J	H	H0	H1	A	N	N1	De			
UCP201	27.4	125	96	30.2	57	14	36	13	19	M10	0.6	UCP201	P201
UCP202	27.4	125	96	30.2	57	14	36	13	19	M10	0.6	UCP202	P202
UCP203	27.4	125	96	30.2	57	14	36	13	19	M10	0.6	UCP203	P203
UCP204	31	127	96	33.3	65	14	38	13	19	M10	0.7	UCP204	P204
UCP205	34.1	140	105	36.5	71	15	38	13	19	M10	0.8	UCP205	P205
UCP206	38.1	165	121	42.9	83	17	48	17	23	M14	1.3	UCP206	P206
UCP207	42.9	167	127	47.6	93	18	48	17	23	M14	1.6	UCP207	P207
UCP208	49.2	184	137	49.2	100	18	54	17	23	M14	1.9	UCP208	P208
UCP209	49.2	190	146	54	106	20	54	17	23	M14	2.2	UCP209	P209
UCP210	51.6	206	159	57.2	114	21	60	20	26	M16	2.6	UCP210	P210
UCP211	55.6	219	171	63.5	126	23	60	20	26	M16	3.3	UCP211	P211
UCP212	65.1	241	184	69.8	138	25	70	20	26	M16	4.6	UCP212	P212
UCP213	65.1	265	203	76.2	151	27	70	25	31	M20	5.9	UCP213	P213
UCP214	74.6	266	210	79.4	157	27	72	25	31	M20	6.6	UCP214	P214
UCP215	77.8	275	217	82.6	163	28	74	25	31	M20	7.4	UCP215	P215
UCP216	82.6	292	232	88.9	175	30	78	25	31	M20	9	UCP216	P216
UCP217	85.7	310	247	95.2	187	32	83	25	31	M20	11	UCP217	P217
UCP218	96	327	262	101.6	200	33	88	27	33	M22	13	UCP218	P218
UCP220	100	380	308	115	225	40	95	30	38	M24	16	UCP220	P20

UCP300 Series – Heavy Duty Pillow Block Units (Set Screw Locking)

Bearing No.	Dimensions(mm)										Weight (kg)	Bearing Type	Housing Type
	B	L	J	H	H0	H1	A	N	N1	De			
UCP305	38	175	132	45	85	15	45	17	20	M14	1.4	UCP305	UCP305
UCP306	43	180	140	50	95	18	50	17	20	M14	1.8	UCP306	UCP306
UCP307	48	210	160	56	106	20	56	17	25	M14	2.8	UCP307	UCP307
UCP308	52	220	170	60	116	22	60	17	27	M14	3	UCP308	UCP308
UCP309	57	245	190	67	129	24	67	20	30	M16	4.1	UCP309	UCP309
UCP310	61	275	212	75	143	27	75	20	35	M16	5.8	UCP310	UCP310
UCP311	66	310	236	80	154	30	80	20	38	M16	7.4	UCP311	UCP311
UCP312	71	330	250	85	165	32	85	25	38	M20	9.4	UCP312	UCP312
UCP313	75	340	260	90	176	33	90	25	38	M20	10	UCP313	UCP313
UCP314	78	360	280	95	187	35	90	27	40	M22	12	UCP314	UCP314
UCP315	82	380	290	100	198	35	110	27	40	M22	14	UCP315	UCP315
UCP316	86	400	300	106	210	40	110	27	40	M22	18	UCP316	UCP316
UCP317	96	420	320	112	220	40	110	33	45	M27	20	UCP317	UCP317
UCP318	96	430	330	118	235	45	110	33	45	M27	24	UCP318	UCP318
UCP319	103	470	360	125	250	45	120	36	50	M30	29	UCP319	UCP319
UCP320	108	490	380	140	275	50	120	36	50	M30	35	UCP320	UCP320

UCF200 Series – Square Flange Bearing Units (Set Screw Locking)

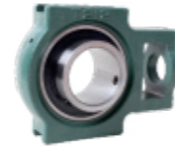


Bearing No.	Dimensions(mm)								Weight (kg)	Bearing Type	Housing Type
	B	L	J	A	A1	A2	N	De			
UCF201	27.4	76	54	25.5	11	15	12	M10	0.7	UCF201	F201
UCF202	27.4	76	54	25.5	11	15	12	M10	0.6	UCF202	F202
UCF203	27.4	76	54	25.5	11	15	12	M10	0.6	UCF203	F203
UCF204	31	86	63.5	25.5	11	15	12	M10	0.7	UCF204	F204
UCF205	34.1	95	70	27	13	16	12	M10	0.9	UCF205	F205
UCF206	38.1	108	82.5	31	13	18	12	M10	1.07	UCF206	F206
UCF207	42.9	117	92	34	15	19	14	M12	1.4	UCF207	F207
UCF208	49.2	130	102	36	15	21	16	M14	1.8	UCF208	F208
UCF209	49.2	137	105	38	16	22	16	M14	2.2	UCF209	F209
UCF210	51.6	143	111	40	16	22	19	M16	2.4	UCF210	F210
UCF211	55.6	162	130	43	18	25	19	M16	3.5	UCF211	F211
UCF212	65.1	175	143	48	18	29	19	M16	4.2	UCF212	F212
UCF213	65.1	187	150	50	21	30	19	M16	5.3	UCF213	F213
UCF214	74.6	193	152	54	22	31	19	M16	5.9	UCF214	F214
UCF215	77.8	200	159	56	22	34	19	M16	6.3	UCF215	F215
UCF216	82.6	208	165	58	22	34	23	M20	7.3	UCF216	F216
UCF217	85.7	220	175	63	24	36	23	M20	8.9	UCF217	F217
UCF218	96	235	187	68	24	40	23	M20	11	UCF218	F218

UCF300 Series – Heavy Duty Square Flange Units (Set Screw Locking)

Bearing No.	Dimensions(mm)								Weight (kg)	Bearing Type	Housing Type
	B	L	J	A	A1	A2	N	De			
UCF305	38	110	80	29	13	16	16	M14	1.1	UCF305	F305
UCF306	43	125	95	32	15	18	16	M14	1.6	UCF306	F306
UCF307	48	135	100	36	16	20	19	M16	2	UCF307	F307
UCF308	52	150	112	40	17	23	19	M16	2.7	UCF308	F308
UCF309	57	160	125	44	18	25	19	M16	3.4	UCF309	F309
UCF310	61	175	132	48	19	28	19	M20	4.5	UCF310	F310
UCF311	66	185	140	52	20	30	23	M20	5.5	UCF311	F311
UCF312	71	195	150	86	22	33	23	M20	6.5	UCF312	F312
UCF313	75	208	166	58	22	33	23	M20	7.9	UCF313	F313
UCF314	78	226	178	61	25	36	25	M22	9.5	UCF314	F314
UCF315	82	236	184	66	25	39	25	M22	12	UCF315	F315
UCF316	86	250	196	68	27	38	31	M27	14	UCF316	F316
UCF317	96	260	204	74	27	44	31	M27	16	UCF317	F317
UCF318	96	280	216	76	30	44	35	M30	19	UCF318	F318
UCF319	103	290	228	94	30	59	35	M30	22	UCF319	F319
UCF320	108	310	242	94	32	59	38	M33	26	UCF320	F320

UCT200 Series – Take-Up Bearing Units (Set Screw Locking)



Bearing No.	Dimensions(mm)												Weight (kg)	Bearing Type	Housing Type
	B	L	L1	L2	H	H1	A	A1	A2	N	N1	N2			
UCT201	27.4	94	61	10	89	76	32	12	21	19	16	32	0.79	UC201	T201
UCT202	27.4	94	61	10	89	76	32	12	21	19	16	32	0.78	UC202	T202
UCT203	27.4	94	61	10	89	76	32	12	21	19	16	32	0.77	UC203	T203
UCT204	31	94	61	10	89	76	32	12	21	19	16	32	0.81	UC204	T204
UCT205	34.1	97	62	10	89	76	32	12	24	19	16	37	0.92	UC205	T205
UCT206	38.1	113	70	10	102	89	32	12	28	22	16	37	1.01	UC206	T206
UCT207	42.9	129	78	13	102	89	37	12	30	22	16	49	1.7	UC207	T207
UCT208	49.2	144	88	16	114	102	49	16	33	29	19	49	2.43	UC208	T208
UCT209	49.2	144	87	16	117	102	49	16	35	29	19	49	2.58	UC209	T209
UCT210	51.6	149	90	16	117	102	49	16	37	29	19	64	2.78	UC210	T210
UCT211	55.6	171	106	19	146	130	64	22	38	35	25	64	3.82	UC211	T211
UCT212	65.1	194	119	19	146	151	64	22	42	35	32	70	4.9	UC212	T212
UCT213	65.1	224	137	21	167	151	70	26	44	41	32	70	7.3	UC213	T213
UCT214	74.6	224	137	21	167	151	70	26	46	41	32	70	7.36	UC214	T214
UCT215	77.8	232	140	21	167	151	70	26	48	41	32	70	7.78	UC215	T215
UCT216	82.06	235	140	21	184	165	70	26	51	41	32	70	8.5	UC216	T216
UCT217	85.7	260	162	29	198	173	73	30	54	48	38	73	11.46	UC217	T217

UCT300 Series – Heavy Duty Take-Up Bearing Units (Set Screw Locking)

Bearing No.	Dimensions(mm)												Weight (kg)	Bearing Type	Housing Type
	B	L	L1	L2	H	H1	A	A1	A2	N	N1	N2			
UCT305	38	122	76	12	89	80	36	12	26	26	16	36	1.4	UC305	T305
UCT306	43	137	85	14	100	90	41	16	28	28	18	41	1.8	UC306	T306
UCT307	48	150	94	15	111	100	45	16	32	30	20	45	2.4	UC307	T307
UCT308	52	162	100	17	124	112	50	18	34	32	22	50	3	UC308	T308
UCT309	57	178	110	18	138	125	55	18	38	34	24	55	4	UC309	T309
UCT310	61	191	117	20	151	140	61	20	40	37	27	61	5	UC310	T310
UCT311	66	207	127	21	163	150	66	22	44	39	29	66	6.4	UC311	T311
UCT312	71	220	135	23	175	160	71	22	46	41	31	71	7.6	UC312	T312
UCT313	75	238	146	25	190	170	80	26	50	43	32	70	9.7	UC313	T313
UCT314	78	252	155	25	202	180	90	26	52	46	36	85	11	UC314	T314
UCT315	82	262	160	25	216	192	90	26	55	46	36	85	14	UC315	T315
UCT316	86	282	174	28	230	204	102	30	60	53	42	98	16	UC316	T316
UCT317	96	298	183	30	240	214	102	32	64	53	42	98	20	UC317	T317
UCT318	96	312	192	30	255	228	110	32	66	57	46	106	22	UC318	T318
UCT319	103	322	197	31	270	240	110	35	72	57	46	106	25	UC319	T319
UCT320	108	345	210	32	290	260	120	35	75	59	48	115	32	UC320	T320

UCFC200 Series – Round Flange Bearing Units (Set Screw Locking)



Bearing No.	Dimensions(mm)											Weight (kg)	Bearing Type	Housing Type
	B	f	L	J	P	A1	j	A2	K	N	De			
UCFC201	27.4	58	97	53	75	19	4	9	6	12	M10	0.6	UC201	FC201
UCFC202	27.4	58	97	53	75	19	4	9	6	12	M10	0.6	UC202	FC202
UCFC203	27.4	58	97	53	75	19	4	9	6	12	M10	0.6	UC203	FC203
UCFC204	31	62	100	55.1	78	20.5	5	10	7	12	M10	0.7	UC204	FC204
UCFC205	34.1	70	115	63.6	90	21	6	10	7	12	M10	1	UC205	FC205
UCFC206	38.1	80	125	70.7	100	23	8	10	8	12	M10	1.3	UC206	FC206
UCFC207	42.9	90	135	77.8	110	26	8	11	9	14	M12	1.6	UC207	FC207
UCFC208	49.2	100	145	84.8	120	26	10	11	9	14	M12	2.1	UC208	FC208
UCFC209	49.2	105	160	93.3	132	26	12	10	14	16	M14	2.7	UC209	FC209
UCFC210	51.6	110	165	97.6	138	28	12	10	14	16	M14	3.1	UC210	FC210
UCFC211	55.6	125	185	106.1	150	31	12	13	15	19	M16	4.2	UC211	FC211
UCFC212	65.1	135	195	113.1	160	36	12	17	15	19	M16	5.3	UC212	FC212
UCFC213	65.1	145	205	120.2	170	36	14	17	15	19	M16	6	UC213	FC213
UCFC214	74.6	150	215	125.1	177	40	14	17	18	19	M16	7	UC214	FC214
UCFC215	77.8	160	220	130.1	184	40	16	18	18	19	M16	7.8	UC215	FC215
UCFC216	82.6	170	240	141.4	200	42	16	18	18	23	M20	9.3	UC216	FC216
UCFC217	85.7	180	250	147.1	208	45	18	18	20	23	M20	11	UC217	FC217
UCFC218	96	190	265	155.5	220	50	18	22	20	23	M20	13	UC218	FC218

UCFS300 Series – Square Flange Bearing Units with Centering Boss (Set Screw Locking)

Bearing No.	Dimensions(mm)										Weight (kg)	Bearing Type	Housing Type
	B	D1	L	J	A	A1	A2	A3	N	De			
UCFS305	38	80	110	80	22	7	9	13	16	M14	14	UC305	FS305
UCFS306	43	90	125	95	24	8	10	15	16	M14	19	UC306	FS306
UCFS307	48	100	135	100	27	9	11	16	19	M16	24	UC307	FS307
UCFS308	52	115	150	112	30	10	13	17	19	M16	3.3	UC308	FS308
UCFS309	57	125	160	125	33	11	14	18	19	M16	4	UC309	FS309
UCFS310	61	140	175	132	36	12	16	19	23	M20	5.3	UC310	FS310
UCFS311	66	150	185	140	39	13	17	20	23	M20	6.2	UC311	FS311
UCFS312	71	160	195	150	42	14	18	22	23	M20	7.4	UC312	FS312
UCFS313	75	175	208	166	42	18	18	22	23	M20	8.6	UC313	FS313
UCFS314	78	185	226	178	43	18	18	25	25	M22	11.2	UC314	FS314
UCFS315	82	200	236	184	48	18	21	25	25	M22	12.7	UC315	FS315
UCFS316	86	210	250	196	48	20	18	31	31	M27	14.3	UC316	FS316
UCFS317	96	220	260	204	54	20	24	31	31	M27	17.2	UC317	FS317
UCFS318	96	240	280	216	56	20	24	35	35	M30	20.4	UC318	FS318
UCFS319	103	250	290	228	74	20	39	35	35	M30	23.9	UC319	FS319
UCFS320	108	260	310	242	74	20	39	38	38	M30	27.1	UC320	FS320