



HIGH QUALITY
BEARING
MANUFACTURER



BKZ INDUSTRY



Tel

+86 18901426056



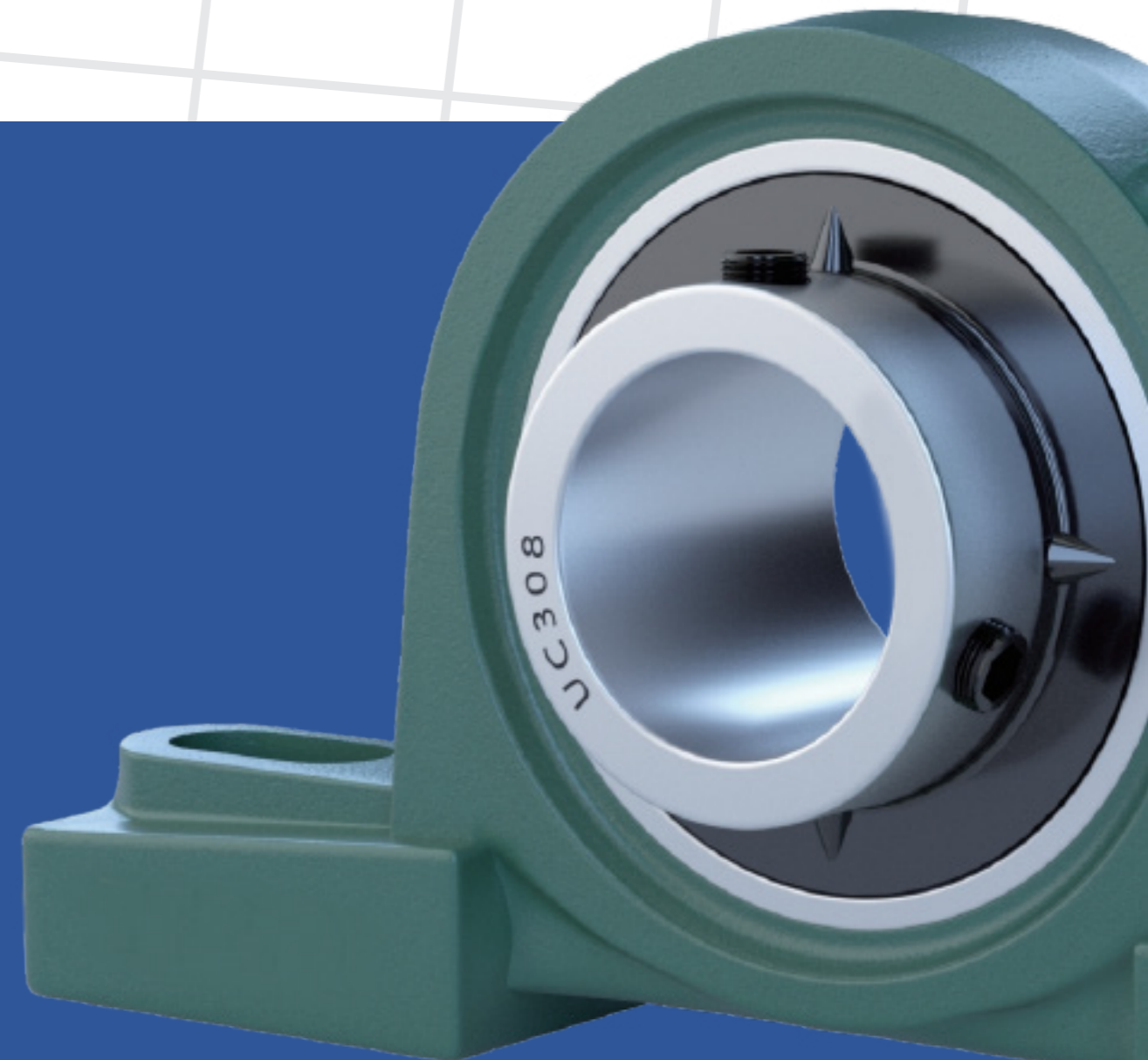
Email

sales@bkzindustry.com



Address

No. 7 Chuangye Road,
Daokou Industrial Park,
Jinghe Town, Baoying
County, Yangzhou City,
Jiangsu Province, China



ENTERPRISE INTRODUCTION

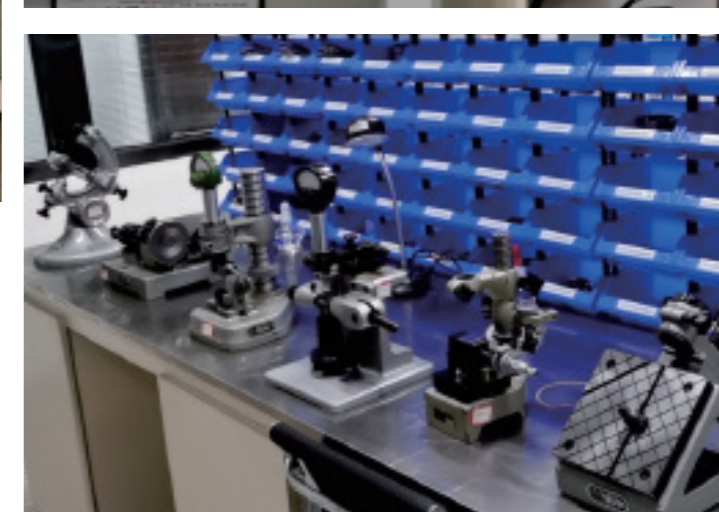
BKZ[®]



BKZ Industry is a leading global manufacturer of high-quality bearings, offering both standard and customized solutions to meet the needs of industries such as automotive, machinery, and mining. With over 15 years of experience, BKZ is committed to delivering efficient, reliable, and sustainable products through advanced manufacturing processes. Our state-of-the-art production lines ensure that we can meet the demands of a wide range of applications, providing bearings that enhance performance and reliability.

Our advanced production capabilities allow us to oversee the entire manufacturing process, from raw material preparation to final packaging, ensuring complete quality control. BKZ is **ISO 9001** certified and offers additional certifications such as REACH and RoHS upon request, underscoring our commitment to quality and compliance.

Our engineering team, backed by years of expertise, works closely with clients to develop bearings that meet their specific needs, delivering customized solutions for diverse industries. Whether you require standard bearings or specialized custom products, BKZ is equipped to provide exceptional service and top-tier products. With plans for continued growth and innovation, we are dedicated to shaping the future of bearing technology and maintaining our position as a trusted industry leader.



PRODUCTION AND TESTING

The company has modern production equipment, perfect quality testing means, mature manufacturing technology, strict production process management and a full range of after-sales service, in strict accordance with the bearing industry standards to ensure product quality, stable and reliable quality.

INSERT BEARINGS

BKZ Industry specializes in high-performance insert ball bearings, including UC, UEL, UC300 and UK series. Designed with a spherical outer diameter, these bearings are engineered to fit standard pillow block and flange housings, ensuring easy installation and reliable operation.

Our insert bearings are available in multiple locking systems, including:

Set screw locking (UC Series)

Eccentric locking collar (UEL Series)

Tapered bore design for adapter sleeve mounting (UK Series)



Manufactured from high-grade bearing steel, BKZ insert bearings deliver excellent load capacity, smooth rotation, and long service life. The self-aligning spherical outer surface compensates for shaft misalignment, reducing vibration and extending bearing performance under demanding working conditions.

Suitable for agricultural machinery, conveyor systems, mining equipment, construction machinery, and industrial transmission applications, BKZ insert bearings provide dependable performance with minimal maintenance requirements.

UC200 Series Set Screw Insert Ball Bearing



轴承代号 Bearing No.	外形尺寸 Dimensions(mm)								重量 Weight (kg)	额定 动负荷 Cr	额定 静负荷 Cor	极限转速 (r/min)
	d	D	B	C	S	G	h	ds				
UC201	12	40	27.4	14	11.5	4.5	4	M5×0.75	0.12	7.6	4.48	4000
UC202	15	40	27.4	14	11.5	4.5	4	M5×0.75	0.11	7.36	4.48	4000
UC203	17	40	27.4	14	11.5	4.5	4	M5×0.75	0.1	7.36	4.48	4000
UC204	20	47	31	17	12.7	4.7	4.5	M5×0.75	0.16	9.88	6.2	4000
UC205	25	52	34.1	17	14.3	5.5	4.5	M6×1	0.19	10.78	6.98	3400
UC206	30	62	38.1	19	15.9	6	5.1	M6×1	0.31	14.97	10.04	2800
UC207	35	72	42.9	20	17.5	6.5	5.8	M8×1	0.48	19.75	13.67	2400
UC208	40	80	49.2	21	19	8	6.2	M8×1	0.62	22.71	15.94	2200
UC209	45	85	49.2	22	19	8	6.5	M8×1	0.67	24.36	17.71	1900
UC210	50	90	51.6	23	19	9	6.5	M10×1	0.78	26.98	19.84	1800
UC211	55	100	55.6	25	22.2	9	7.3	M10×1	1.03	33.37	25.11	1600
UC212	60	110	65.1	27	25.4	11	7.7	M10×1	1.45	36.74	27.97	1500
UC213	65	120	65.1	28	25.4	12	8.3	M10×1	0.71	44.01	34.18	1400
UC214	70	125	74.6	30	30.2	12	8.7	M12×1.25	2.06	46.79	37.59	1300
UC215	75	130	77.8	30	33.3	12	9.2	M12×1.25	2.22	50.85	41.26	1200
UC216	80	140	82.6	33	33.3	14	9.6	M12×1.25	2.8	55.04	45.09	1100
UC217	85	150	85.7	36	34.1	14	10.5	M12×1.25	3.48	64.01	53.28	1000
UC218	90	160	96	37	39.7	14	11.1	M12×1.25	4.3	73.83	60.76	950

UEL200 Series - Eccentric Locking Collar Insert Bearing



轴承代号 Bearing No.	外形尺寸 Dimensions(mm)											重量 Weight (kg)	额定 动负荷 Cr	额定 静负荷 Cor	极限转速 (r/min)
	d	D	B	B1	C	S	D1	B2	G	h	ds				
UEL205	25	52	34.9	44.4	17	17.5	38.1	13.5	4.8	4.5	M6×1	0.28	10.78	6.98	3400
UEL206	30	62	36.5	48.4	19	18.3	44.5	15.9	6	5.1	M8×1	0.4	14.97	10.04	2800
UEL207	35	72	37.6	21.5	20	18.8	55.6	17.5	6.8	5.8	M8×1	0.61	19.75	13.67	2400
UEL208	40	80	42.8	56.3	21	21.4	60.3	18.3	6.8	6.2	M8×1	0.72	22.71	15.94	2200
UEL209	45	85	42.8	56.3	22	21.4	63.5	18.3	6.8	6.5	M8×1	0.81	24.6	17.71	1900
UEL210	50	90	49.2	62.7	24	24.6	69.9	18.3	7	6.5	M10×1	0.98	26.98	19.84	1800
UEL211	55	100	55.5	71.4	25	27.8	76.2	20.7	7	7.3	M10×1	1.3	33.37	25.11	1600
UEL212	60	110	61.9	77.8	27	31	84.2	22.3	8	7.7	M10×1	1.78	36.74	27.97	1500
UEL213	65	120	69.2	85.7	28	34.1	86	23.5	8.5	8.3	M12×1.25	2.48	44.01	34.18	1400
UEL214	70	125	69.2	85.7	29	34.1	90	23.5	8.5	8.7	M12×1.25	2.5	46.79	37.59	1300
UEL215	75	130	76.6	92	30	37.3	102	23.5	8.5	9.2	M12×1.25	2.86	50.85	41.26	1200
UEL216	80	140	70	92	33	33.3	110	30	11	9.6	M12×1.25	3.3	55.04	45.09	1100
UEL218	90	160	80	100	37	39.7	115	30	12	11.1	M12×1.25	4.8	73.83	60.76	950
UEL306	30	72	36.5	50	23	17.5	49	17.5	6.5	6.7	M8×1	0.69	20.87	14.17	2600
UEL308	40	90	41.5	57.1	27	20.6	63.5	20.6	8.1	8.2	M10×1	1.08	31.35	22.38	2000
UEL310	50	110	49.4	66.6	32	22.2	76	22.2	9	10	M12×1.25	1.86	47.58	35.71	1700
UEL311	55	120	55.8	73	34	22.2	82	22.2	9	10.7	M12×1.25	2.34	55.05	41.91	1400

UC300 Series – Heavy Duty Set Screw Insert Bearings

轴承代号 Bearing No.	外形尺寸 Dimensions(mm)								重量 Weight (kg)	额定 动负荷 Cr	额定 静负荷 Cor	极限转速 (r/min)
	d	D	B	C	S	G	h	ds				
UC305	25	62	38	21	15	6	6.1	M6×1	0.35	17.22	11.39	2800
UC306	30	72	43	23	17	6	6.7	M8×1	0.56	20.77	14.17	2600
UC307	35	80	48	25	19	8	7.4	M8×1	0.71	25.66	17.92	2200
UC308	40	90	52	27	19	10	8.2	M10×1	0.96	31.35	22.38	2000
UC309	45	100	57	30	22	10	9	M10×1	1.28	40.66	30	1800
UC310	50	110	61	32	22	12	10	M12×1.25	1.65	47.58	35.71	1700
UC311	55	120	66	34	25	12	10.7	M12×1.25	1.9	55.05	41.91	1400
UC312	60	130	71	36	26	12	11.5	M12×1.25	2.6	62.88	48.6	1300
UC313	65	140	75	38	30	12	12.2	M12×1.25	3.15	72.21	56.68	1200
UC314	70	150	78	40	33	12	13	M12×1.25	3.83	80.1	63.48	1100
UC315	75	160	82	42	33	14	13.8	M14×1.5	4.59	87.25	71.67	1000
UC316	80	170	86	44	34	14	14.5	M16×1.5	5.3	94.57	80.35	1000
UC317	85	180	96	46	40	16	15	M16×1.5	6.58	102.05	89.52	950
UC318	90	190	96	48	40	16	15.9	M16×1.5	7.5	110.81	100.76	900
UC319	95	200	103	50	41	16	16.7	M16×1.5	8.7	120.51	113.75	850
UC320	100	215	108	54	42	18	18	M16×1.5	10.8	133.06	131.18	800

UK200 Series – Tapered Bore Insert Bearings

轴承代号 Bearing No.	外形尺寸 (英寸) 或 (毫米) Dimensions (in.) or (mm)						重量 WEIGHT (KG)	额定 动负荷 Cr	额定 静负荷 Cor	极限转速 (r/min)
	d	D	B	C	h	s				
UK 205	25	52	21	17	4.5	10.5	0.15	10.78	6.98	3400
UK 206	30	62	25	19	5.1	12.5	0.24	14.97	10.04	2800
UK 207	35	72	27	20	5.8	13.5	0.37	19.75	13.67	2400
UK 208	40	80	29	21	6.2	14.5	0.48	22.71	15.94	2200
UK 209	45	85	30	22	6.5	15	0.53	24.36	17.71	1900
UK 210	50	90	31	23	6.5	15.5	0.59	26.98	19.84	1800
UK 211	55	100	33	25	7.3	16.5	0.77	33.37	25.11	1600
UK 212	60	110	36	27	7.7	18	1.03	36.74	27.97	1500
UK 213	65	120	36	28	8.3	18	1.36	44.01	34.18	1400
UK 215	75	130	41	30	9.2	20.5	1.53	50.85	41.26	1200
UK 216	80	140	44	33	9.6	22	1.96	55.04	45.09	1100
UK 217	85	150	44	36	10.5	22	2.42	64.01	53.28	1000
UK 218	90	160	48	37	11.1	24	3	73.83	60.76	950
UK316	80	170	55	44	14.5	27.5	4.37	94.57	80.35	1000
UK318	90	190	60	48	15.9	30	6.02	110.81	100.78	900
UK320	100	215	68	54	18	34	8.5	133.06	131.18	800